



PROPERTY OVERVIEW

- ~4 acres total
- Steps from incoming 16-acre residential development
- Zoned R3, MR-2, in Scottdale Overlay District
- Tract one includes a church + two undeveloped acres
- 4,500 SF church in good condition

Asking Price: \$689,000

609 Rufus Henderson Dr, Scottdale, GA
622 Glendale Rd, Scottdale, GA

Asking Price: \$186,000

0 Rufus Henderson Dr, Scottdale, GA
610 Rufus Henderson Dr, Scottdale, GA
622 Rufus Henderson Dr, Scottdale, GA
616 Rufus Henderson Dr, Scottdale, GA
3267 Rufus Henderson Dr, Scottdale, GA
3260 Tobie Grant Ln, Scottdale, GA
3268 Tobie Grant Ln, Scottdale, GA



FOR MORE INFORMATION PLEASE CONTACT:
Eric Carlton | 404-371-0168 | ecarlton@oakrep.com

Information contained herein has been obtained from sources deemed reliable but we cannot guarantee its accuracy. No liability is assumed for errors or omissions.

FOR SALE

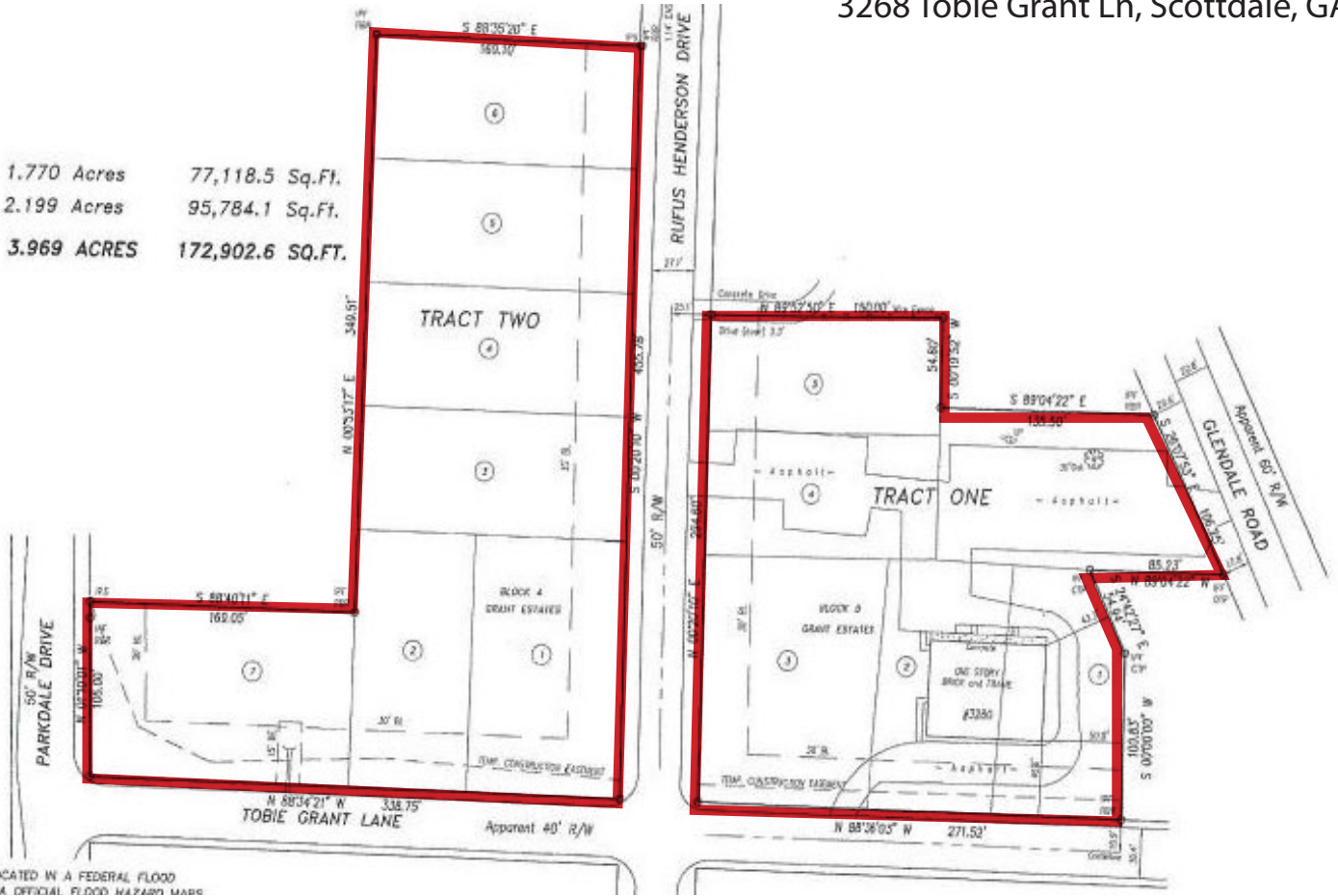
(TRACT ONE) Asking Price: \$689,000

609 Rufus Henderson Dr, Scottdale, GA
622 Glendale Rd, Scottdale, GA

(TRACT TWO) Asking Price: \$186,000

0 Rufus Henderson Dr, Scottdale, GA
610 Rufus Henderson Dr, Scottdale, GA
622 Rufus Henderson Dr, Scottdale, GA
616 Rufus Henderson Dr, Scottdale, GA
3267 Rufus Henderson Dr, Scottdale, GA
3260 Tobie Grant Ln, Scottdale, GA
3268 Tobie Grant Ln, Scottdale, GA

TRACT ONE: 1.770 Acres 77,118.5 Sq.Ft.
TRACT TWO: 2.199 Acres 95,784.1 Sq.Ft.
TOTAL AREA: 3.969 ACRES 172,902.6 SQ.FT.



FOR MORE INFORMATION : Eric Carlton | 404-371-0168 | ecarlton@oakrep.com

Information contained herein has been obtained from sources deemed reliable but we cannot guarantee its accuracy. No liability is assumed for errors or omissions.