

FOR LEASE



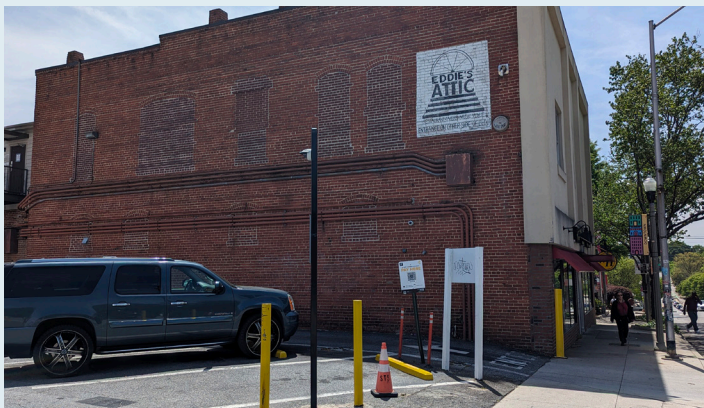
3,029 - 4,629 SF



Exclusive Offering

PROPERTY OVERVIEW

515 N. McDonough St. is a 4,629 SF second generation restaurant space located at Decatur's historic Square. Situated below Eddie's Attic and next to Decatur City Hall, the space is also ideal for retail concepts that want to be in the center of it all - festivals, concerts, exhibits, and tourism.



Downtown Decatur 2nd Generation Restaurant Space

515 N. McDonough Street, Decatur, GA 30030



FOR MORE INFORMATION, PLEASE CONTACT
Eric Carlton, LEED A.P. | 404-371-4100 | ecarlton@oakrep.com


FOR LEASE



Downtown Decatur 2nd Generation Restaurant Space

515 N. McDonough Street, Decatur, GA 30030



96 
Downtown Decatur has a walking score of 96 which is considered "Walker's Paradise" by walkscore.com

Downtown Decatur

Centered around the historic DeKalb County Courthouse and lawn, Downtown Decatur contains over 15 blocks of retail and restaurants. You'll find storefront spaces, standalone retail, professional offices, converted residential space and more along Decatur's main thoroughfares and side streets. The city's four square miles are home to 200+ storefront shops, galleries, salons, services, cafes and restaurants making it a regional destination for dining and nightlife as well as a browse-worthy draw for boutique shopping.

- 1. Grindhouse Killer Burgers
- 2. Chick-fil-A
- 3. Jeni's Splendid Ice Cream
- 4. Iberian Pig
- 5. Victory Sandwich Bar
- 6. Leon's Full Service
- 7. Brick Store Pub
- 8. Parker's On Ponce
- 9. No. 246
- 10. Saponi di Napoli
- 11. Kimball House
- 12. Folk Art
- 13. Savi Provisions
- 14. Chipotle
- 15. CVS Pharmacy
- 16. Effen Egg
- 17. J. Christopher's

FOR LEASE



Downtown Decatur 2nd Generation Restaurant Space

515 N. McDonough Street, Decatur, GA 30030



13,000+
Employees &
Students



15,000+
Employees



15,000+
Employees



12,000+
Employees



2,300+
Employees &
Students

Within 5 Miles



354,861

Population



\$134,265

Average Household Income



160,233

Total Households



62%

Have a Bachelor's Degree or Higher



282,093

Employees



92

(Walker's Paradise)

Walk Score from walkscore.com

FOR MORE INFORMATION, PLEASE CONTACT: Eric Carlton, LEED A.P. | 404-371-4100 | ecarlton@oakrep.com

Information contained herein has been obtained from sources deemed reliable but we cannot guarantee its accuracy. No liability is assumed for errors or omissions.

