

FOR SALE



PROPERTY OVERVIEW

4.6 acres of land in Northwest Henry County. This site offers a unique development opportunity for medium density residential and mixed use commercial in Ellenwood, GA. Anvil Block Road has been widened providing a busy east/west connection to and from I-675. The site is conveniently located near commercial shopping centers and new county recreational fields.

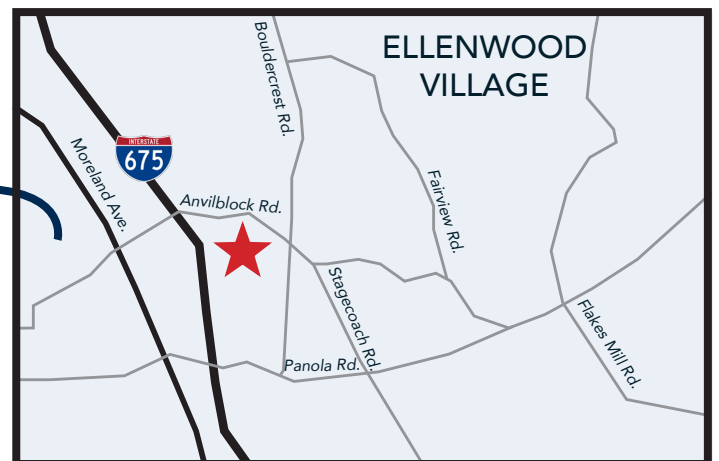
FEATURES

- Price Upon Request
- 4.6 Acres
- Prime Multi Family Development Site
- Northwest Henry County
- Highway Corridor Overlay District
- Mixed Use Zoning - Future Land Use
- 16 Units/Net Acre
- Retail Sub-Market
- All Utilities to the Property


Atlanta Airport
~ 14 Miles

Commercial Mixed-use Development Opportunity

4002 Anvil Block Road
Ellenwood, GA 30294



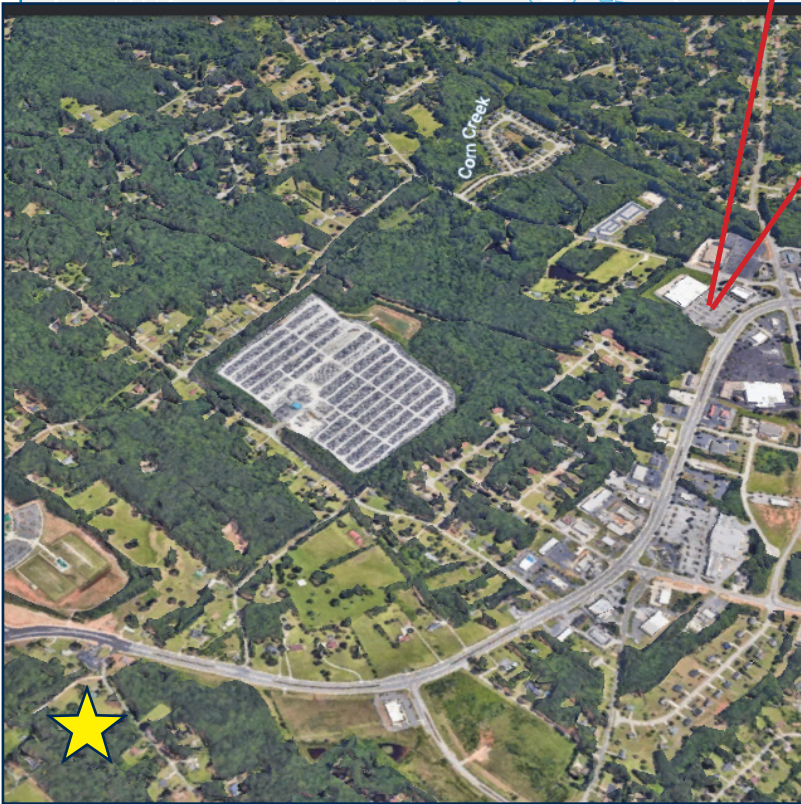
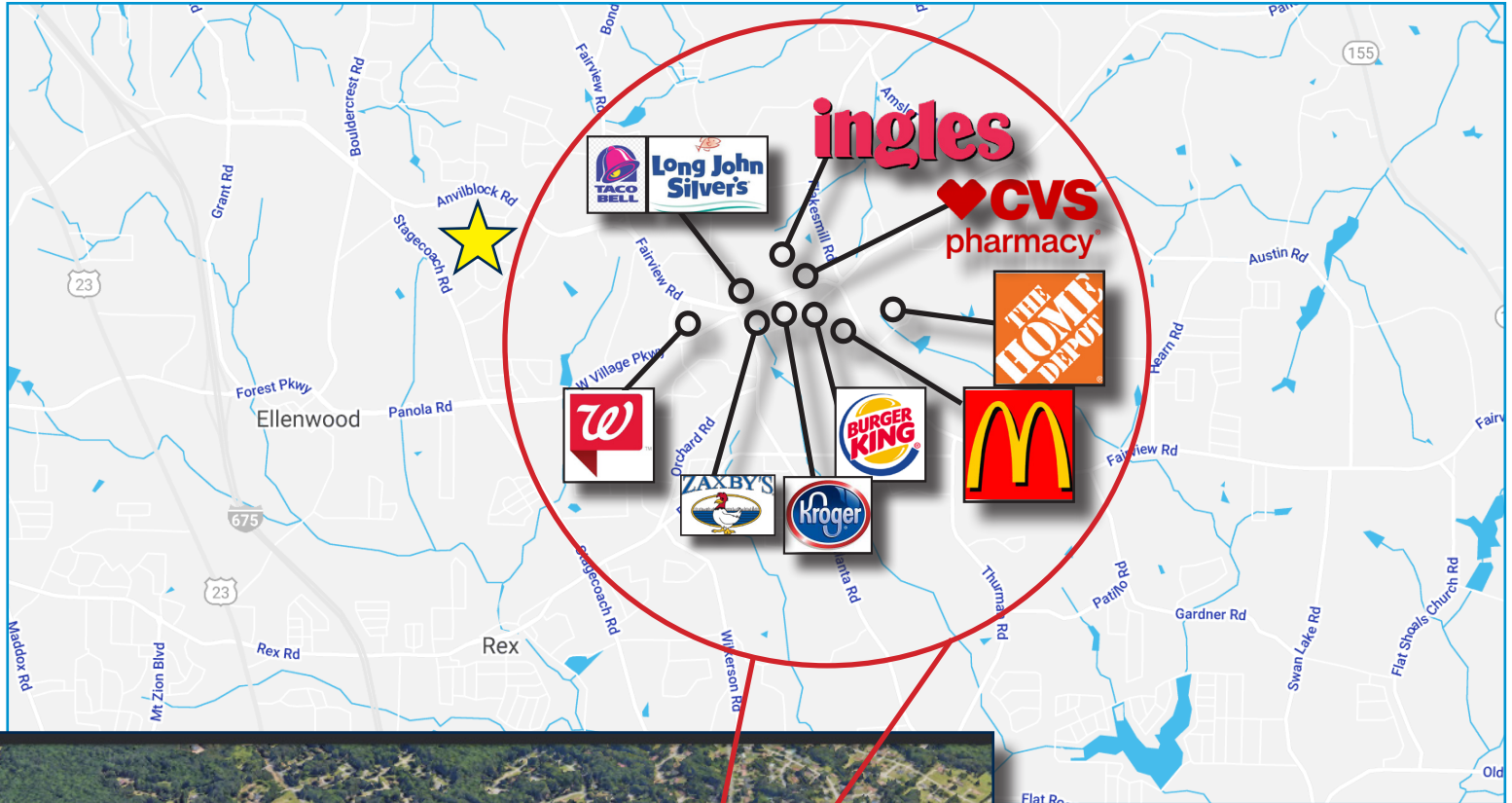
FOR MORE INFORMATION, PLEASE CONTACT
Todd Semrau | 404-254-1379 | tsemrau@oakrep.com

FOR SALE



Commercial Mixed-use Development Opportunity

4002 Anvil Block Road Ellenwood, GA 30294



AREA DEMOGRAPHICS			
	1 Mile	3 Mile	5 Mile
Population	2,228	36,102	131,968
Household Income	\$87,147	\$90,297	\$80,116
Total Households	876	13,079	49,729

FOR MORE INFORMATION : Todd Semraul 404-254-1379 | tsemrau@oakrep.com

Information contained herein has been obtained from sources deemed reliable but we cannot guarantee its accuracy. No liability is assumed for errors or omissions.