

FOR LEASE



**Suites From
675 - 781 SF**

PROPERTY OVERVIEW

235 E. Ponce is an incredibly well-located, multi-tenant office building conveniently situated in the heart of downtown Decatur, GA. The property is within easy walking-distance of the myriad of restaurant, retail, mixed-use, and hotel offerings found throughout downtown Decatur's vibrant business district. 235 E. Ponce is less than ¼ mile from the Decatur MARTA rail station and enjoys frontage and visibility on both Sycamore Street and E. Ponce de Leon Avenue (the "Peachtree Street" of Decatur) along with abundant on-site parking.

FEATURES

- » Conveniently located in the heart of bustling downtown Decatur
- » Walk to a variety of diverse local restaurants and shops
- » 1/4 mile from Decatur MARTA station
- » Abundant on-site parking

Downtown Decatur Office Building

*235 E Ponce de Leon Ave.
Decatur, GA 30030*



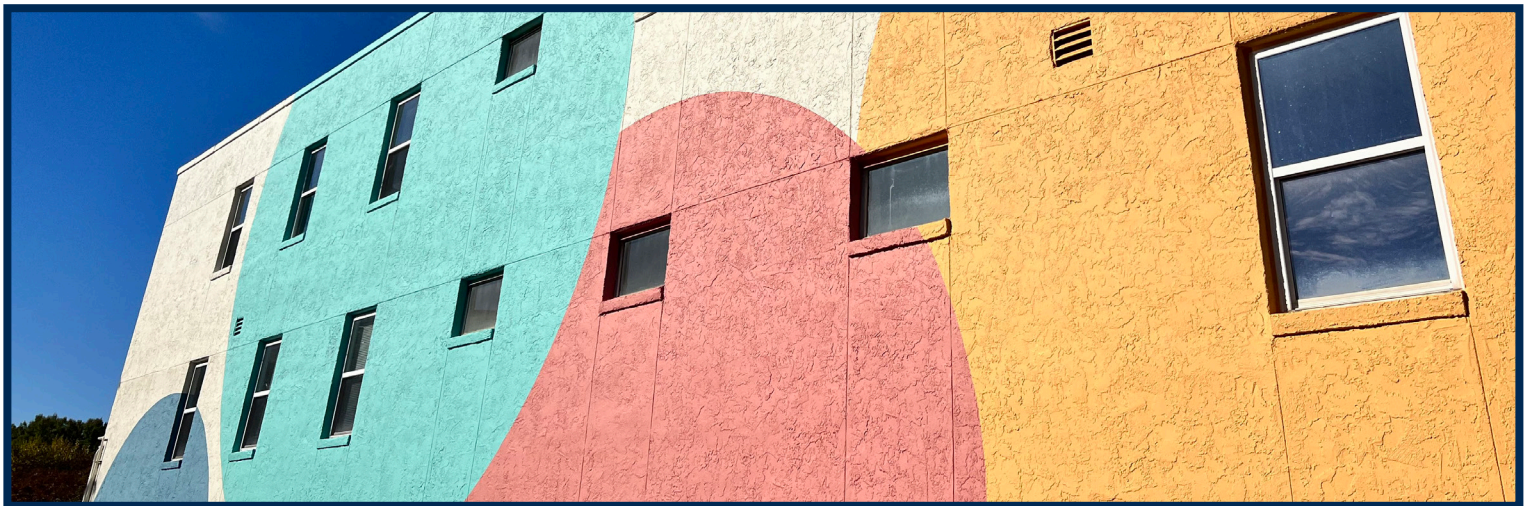
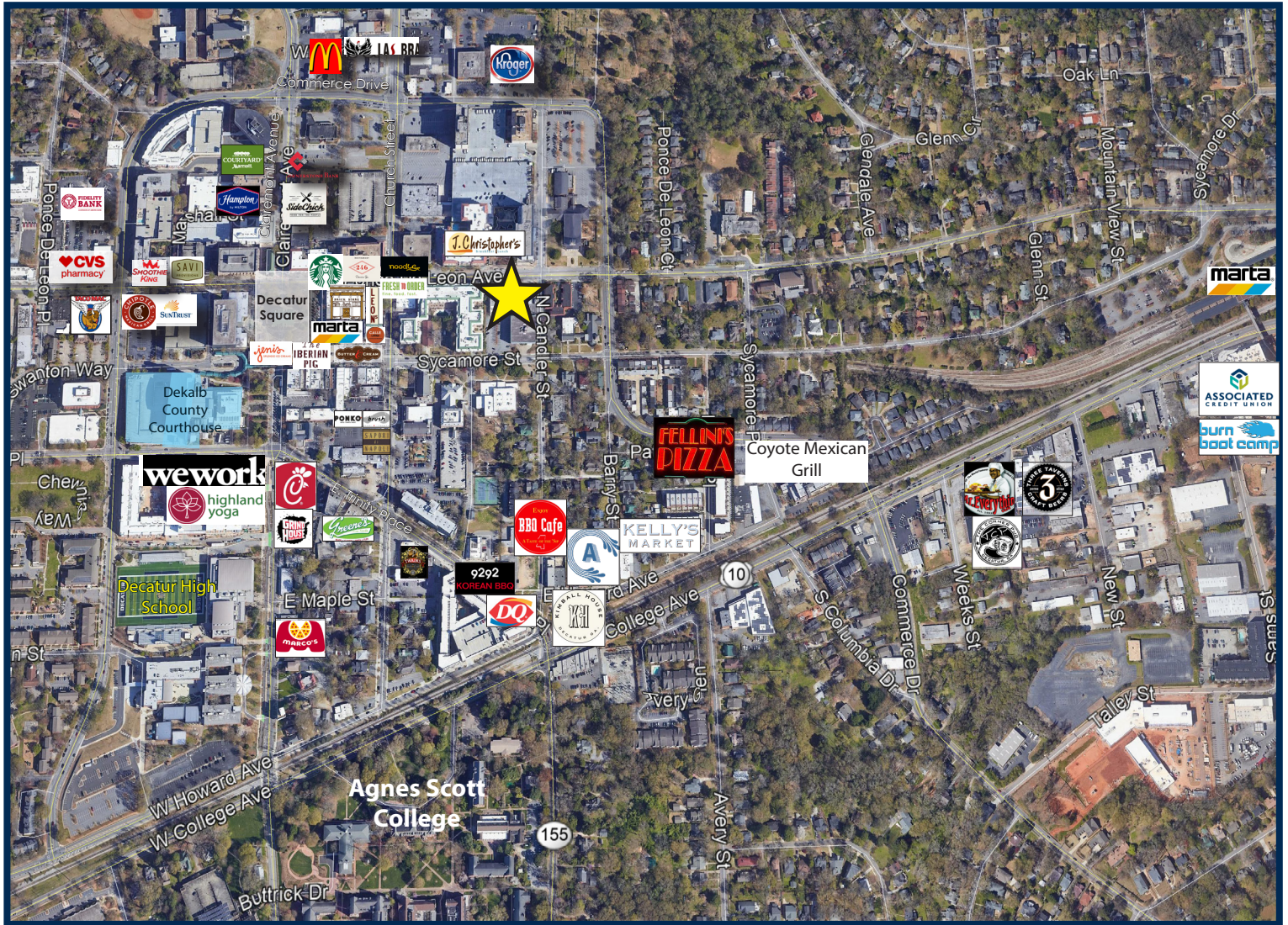
FOR MORE INFORMATION, PLEASE CONTACT
Bart Lester | 404-371-4100 | blester@oakrep.com

FOR LEASE



Downtown Decatur Office Building

235 E Ponce de Leon Ave., Decatur, GA 30030



FOR MORE INFORMATION: Bart Lester 404-371-4100 | blester@oakrep.com

Information contained herein has been obtained from sources deemed reliable but we cannot guarantee its accuracy. No liability is assumed for errors or omissions.

FOR LEASE



Downtown Decatur Office Building

235 E Ponce de Leon Ave., Decatur, GA 30030



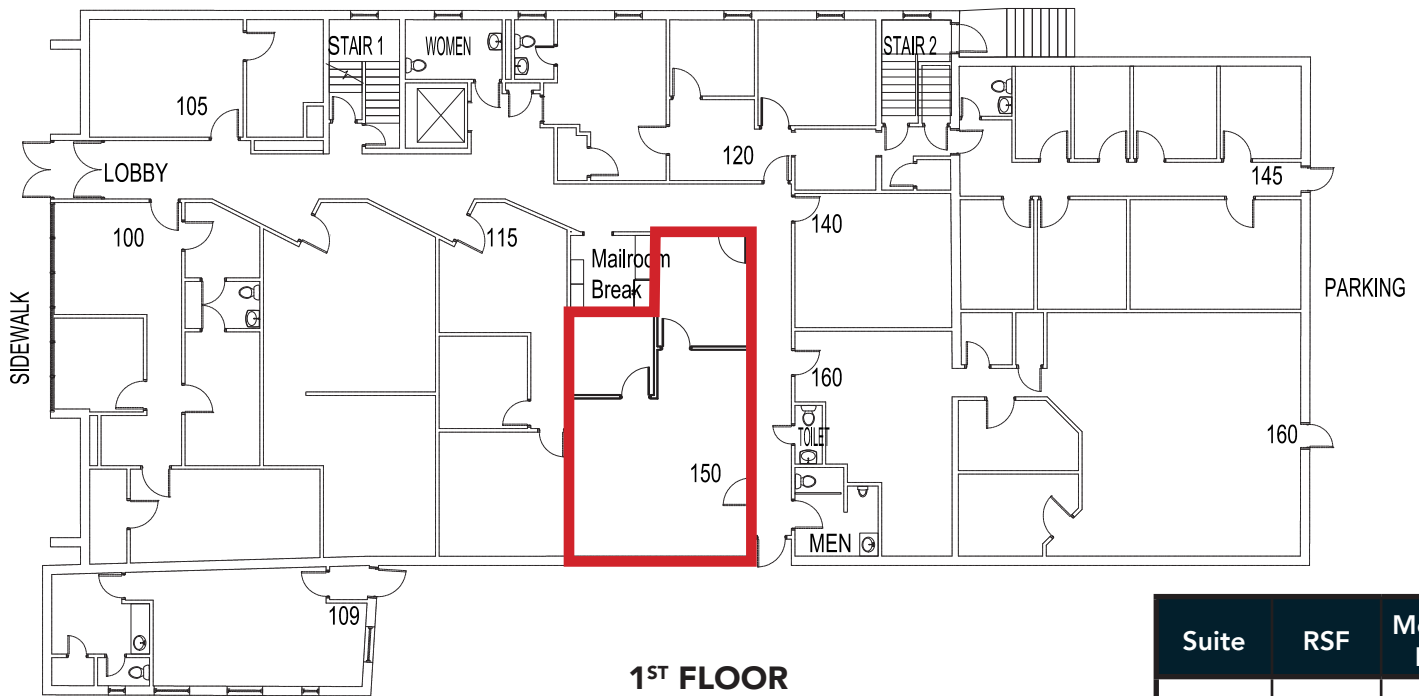
FOR MORE INFORMATION: Bart Lester 404-371-4100 | blester@oakrep.com

Information contained herein has been obtained from sources deemed reliable but we cannot guarantee its accuracy. No liability is assumed for errors or omissions.

FOR LEASE



Downtown Decatur Office Building



Suite	RSF	Monthly Rent
150	781	\$1,800



Suite	RSF	Monthly Rent
320	675	\$1,520
325	737	\$1,660

FOR MORE INFORMATION: Bart Lester 404-371-4100 | blester@oakrep.com

Information contained herein has been obtained from sources deemed reliable but we cannot guarantee its accuracy. No liability is assumed for errors or omissions.